

# Stitching Cards

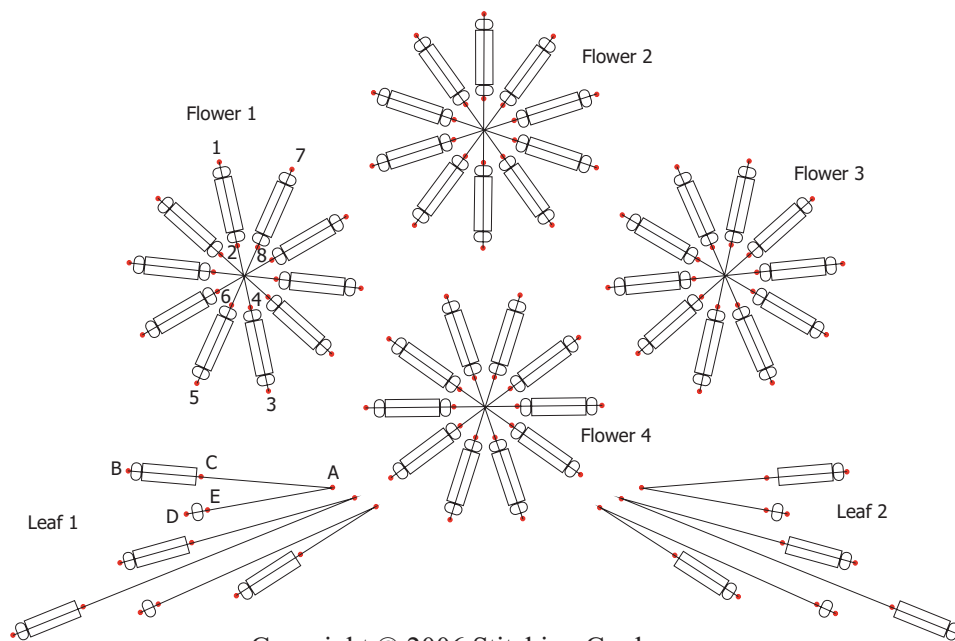
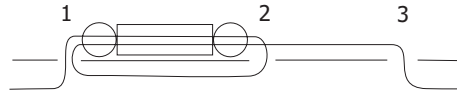
## Bead Sample 1

These pattern details should be used in conjunction with the Stitching Cards General Instructions. “Out at ...” means passing the needle through a hole from the back of the card to the front. “In at ...” means passing the needle through a hole from the front of the card to the back.

The beads are stitched as follows:

Out at 1, through the beads and in at 2

Out at 1, through the beads and in at 3



Copyright © 2006 Stitching Cards

The bead sample is worked in Gold thread (Kreinik 1 ply polyester metallic cord 002C) and Green (008C) plus beads.

2mm diameter (1/8 inch – aught size 10/0) seed beads:

12 green, 40 light blue; 40 gold.

7mm (1/4 inch - Czech size 3) bugle beads:

8 green; 20 light blue; 20 dark blue.

### Leaves.

Green thread, green seed beads, green bugle beads.

Shown on leaf 1.

Out at A, through the beads and in at B.

Out at C, through the beads and in at B.

Out at D, through the bead and in at E.

Out at D, through the bead and in at A.

Stitch the other beads on leaf 1 in a similar way using the illustration as a guide.

Stitch leaf 2 in a similar way.

### Flowers.

Shown on flower 1.

Gold thread, light blue and gold seed beads, light blue bugle beads.

Out at 1, through the beads and in at 2.

Out at 1, through the beads, through a second set of beads and in at 3.

Out at 4, through the second set of beads and in at 3.

Out at 5, through the beads and in at 6.

Out at 5, through the beads, through a second set of beads and in at 7.

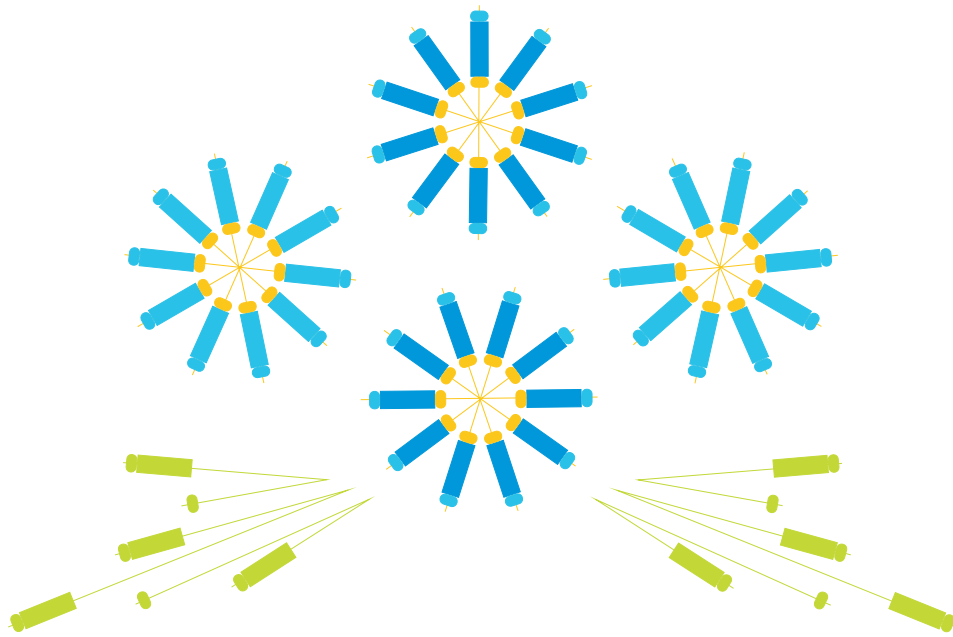
Out at 8, through the second set of beads and in at 7.

Stitch the other beads on flower 1 in a similar way using the illustration as a guide.

Stitch flower 3 in a similar way to flower 1.

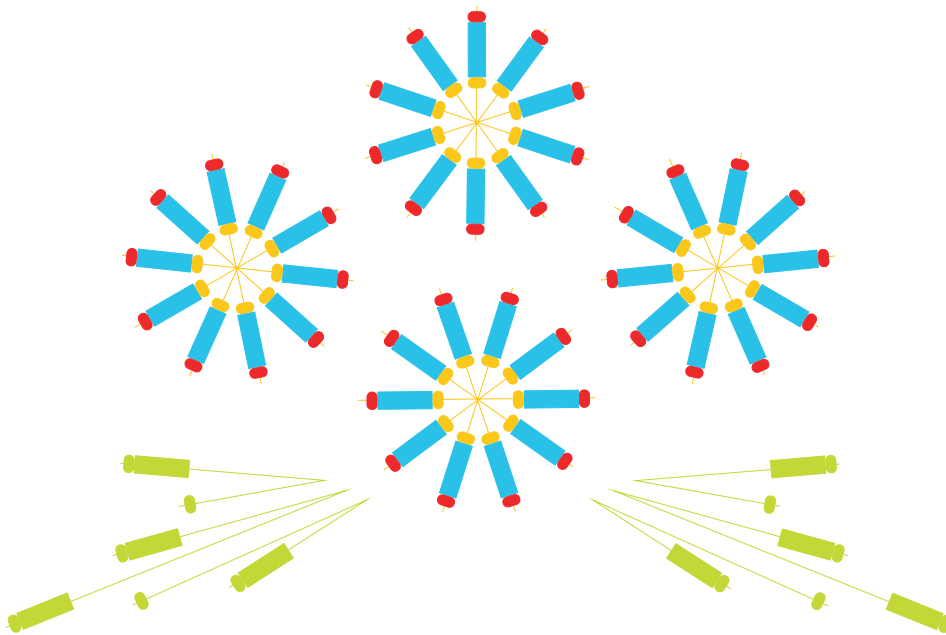
Stitch flowers 2 and 4 in a similar way substituting dark blue bugle beads.

Bead Sample

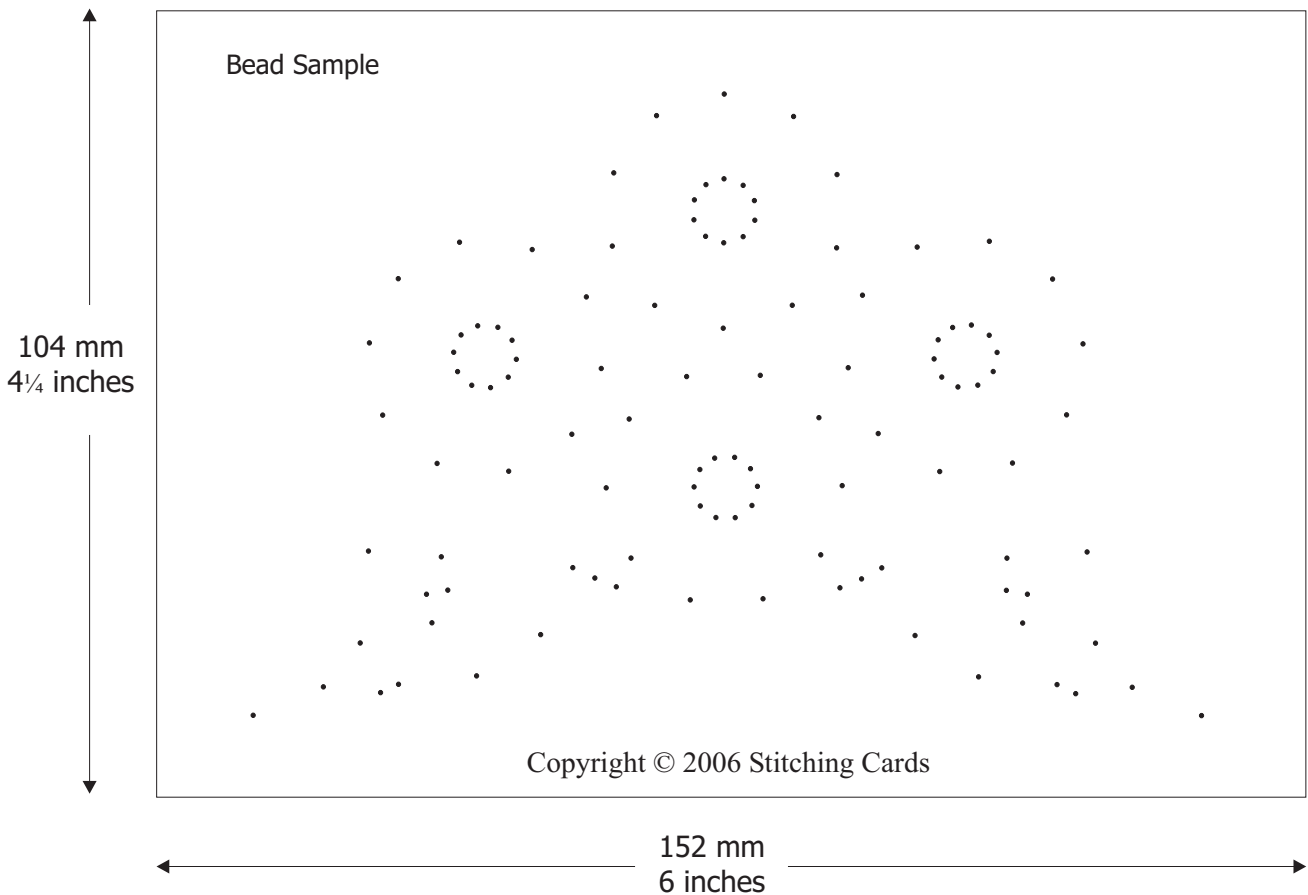


Copyright © 2006 Stitching Cards

Alternative colour suggestion



Copyright © 2006 Stitching Cards



When you print the pricking pattern please make sure you have the printer page scaling set to "None". Failure to do this could cause the page to print at a different size from the one intended.

This free sample pattern was downloaded from [www.stitchingcards.com](http://www.stitchingcards.com)  
If you would like to be informed when new Stitching Cards designs are ready for sale at [www.stitchingcards.com](http://www.stitchingcards.com) then please visit our web site and join our mailing list.

These instructions are copyright © 2006 Stitching Cards.

Published at [www.stitchingcards.com](http://www.stitchingcards.com)

E-mail [info@stitchingcards.com](mailto:info@stitchingcards.com)

This Bead Sample Stitching Cards pattern can be used to produce cards for personal pleasure and personal giving.

Any card made from this pattern and offered for sale must include an official copyright sticker. Copyright stickers can be purchased from [www.stitchingcards.com](http://www.stitchingcards.com).

Reproduction of this Bead Sample pattern is allowed for personal or teaching use. This copyright notice should appear on all copies of the pattern.

This pattern is exclusively available from [www.stitchingcards.com](http://www.stitchingcards.com).

# Stitching Cards General Instructions

Published at [www.stitchingcards.com](http://www.stitchingcards.com)

You will need a suitable pricking mat. This could be foam or felt but should allow easy penetration of the pricking pin whilst protecting your work surface. Lay your blank card onto the pricking mat with the right side (outside) of the card facing upwards.

Place the pricking pattern on the card in the required position. Use a fine pricking tool to pierce through the pattern and the card. If you do not have a purpose made pricking tool then a hat pin or similar can be used.

Remove the pricking pattern. The pricked holes can be seen on the card.

Turn the card over so the wrong side (inside) is uppermost.. Select a suitable thread such as Kreinik metallic cord. Use a Number 10 embroidery needle. Use a length of thread that you are comfortable with. We suggest using about a third of a metre (14 inches). Secure the end of the thread to the card with adhesive tape. Pass the needle through the start hole from the back to the front of the card.

Follow the instruction diagram. Refer to the finished diagram from time to time to see the complete stitching required.

When the thread on your needle runs out secure the end of the thread with adhesive tape on the back of the card and start a new thread.

Continue to follow the instructions a section at a time. Some patterns uses beads. These are held in place with stitching. You may need to use a beading needle if the bead holes are very fine.

If you are using a double fold card (a card with three panels) then place the completed card on your work surface with the right side facing downwards. Fold the left-hand panel across to cover and hide the back of the stitching work. Secure the panel in place with double-sided adhesive tape or card adhesive.

The stitching of your card is now complete. You may choose to add a suitable greeting with stickers, stamping or handwriting.

## Stitching Terminology.

Where the instructions say “Out at” this means passing the needle through a hole from the back of the card to the front.

Where the instructions say “In at” this means passing the needle through a hole from the front of the card to the back.

Where the design calls for back stitch this works as follows:

Out at 2 in at 1

Out at 3 in at 2

Out at 4 in at 3

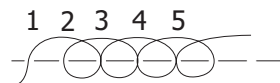


Where the design calls for stem stitch this works as follows:

Out at 1 in at 3

Out at 2 in at 4

Out at 3 in at 5



Copyright © 2006 Stitching Cards

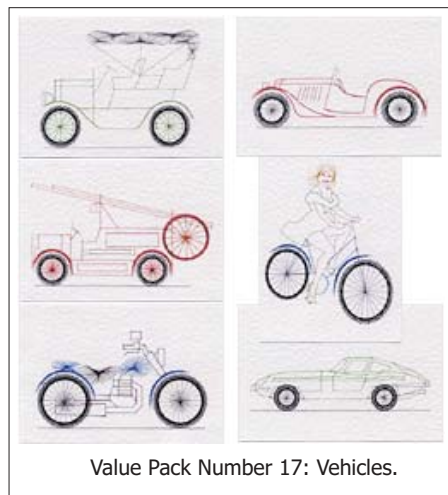
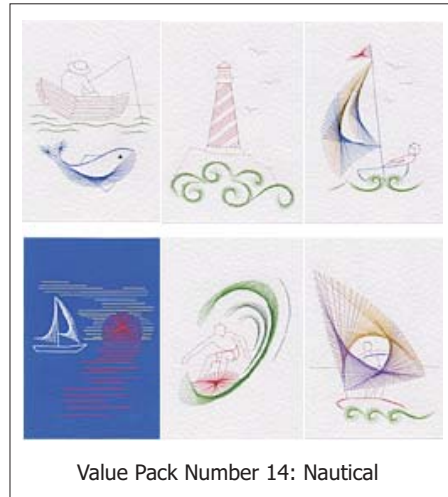
Web site [www.stitchingcards.com](http://www.stitchingcards.com)

Stitching Cards, PO Box 795, St. Albans, AL2 2ZQ, UK

# Stitching Cards

Make beautiful greetings cards that impress your friends

With our patterns and easy to follow instructions you can make beautiful greetings cards that your loved ones and special friends will treasure.



The illustrations on this page show some of our Value Packs. Patterns are also available individually. Value Packs contain six patterns for the price of five separate patterns. You get pattern sheets with step-by-step instructions for each design. Please see our web site for pattern prices.

Stitching Cards web site: [www.stitchingcards.com](http://www.stitchingcards.com)

Stitching Cards, PO Box 795, St. Albans, AL2 2ZQ, UK  
All patterns are copyright © 2004 - 2006 Stitching Cards.



10% of all sales from these patterns will be donated to EveryChild, the international children's charity.

Visit the EveryChild web site at [www.everychild.org.uk](http://www.everychild.org.uk).